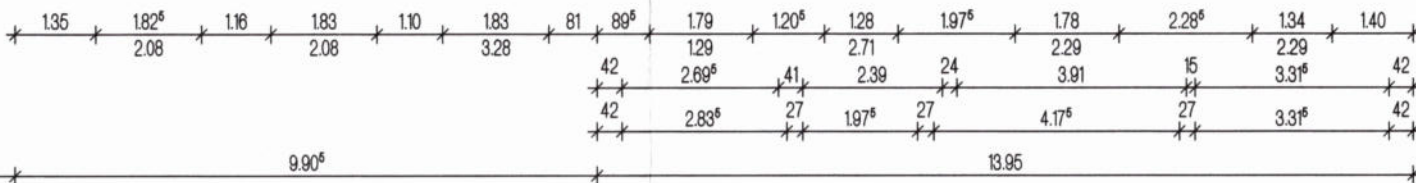
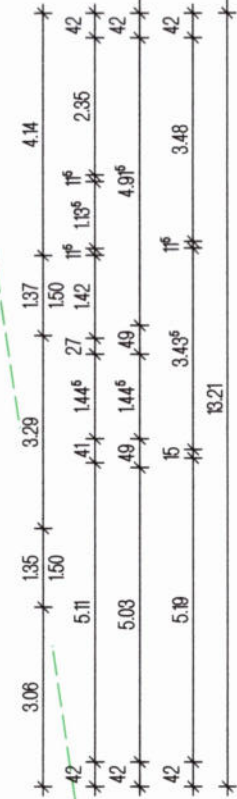
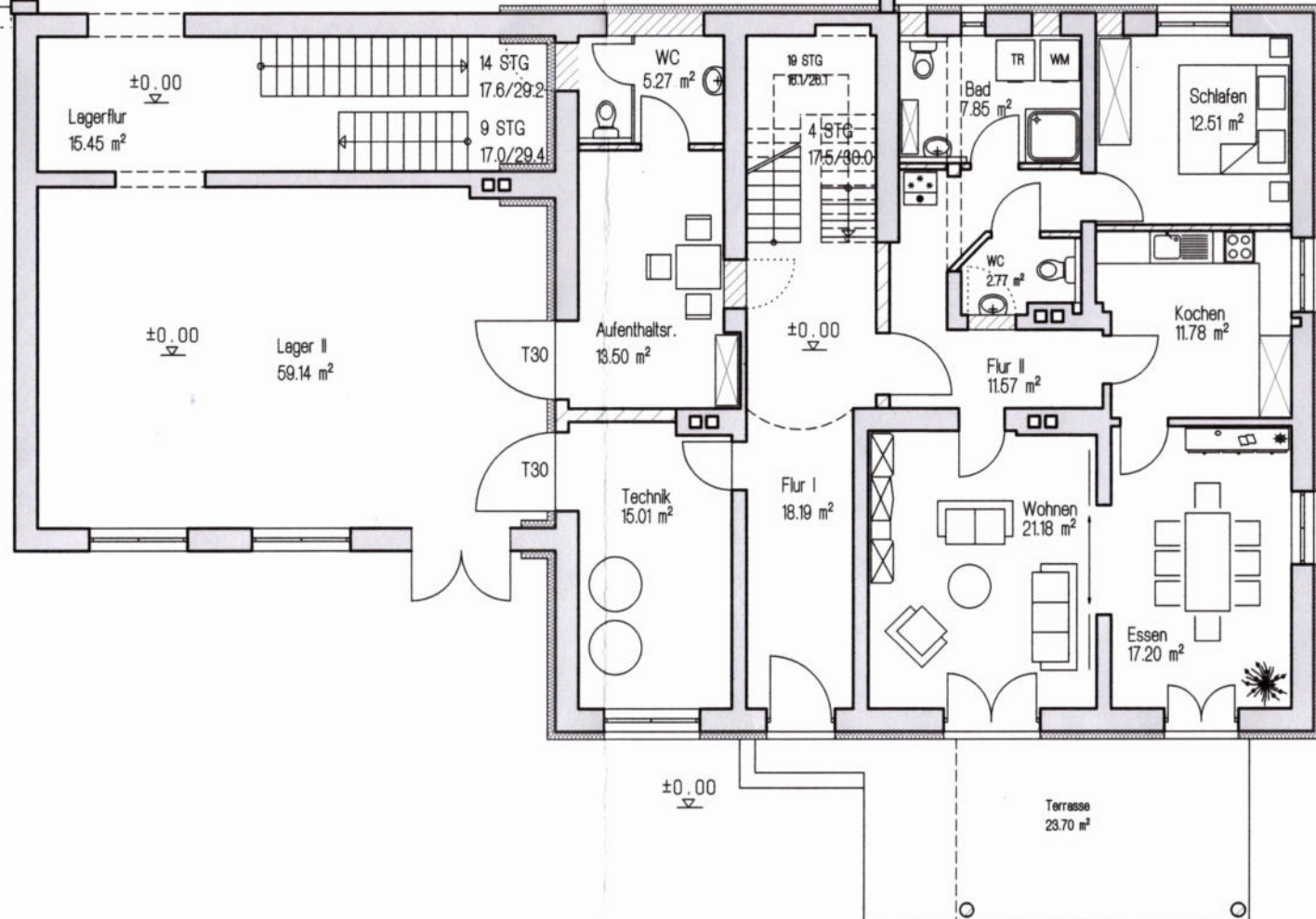
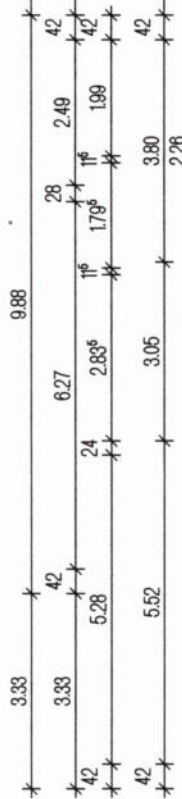


Lagerräume sind
nicht Bestandteil
des Bauantrages

Überbauter Lagerplatz
61.98 m²



Stütungen

Dachneigung 47

+13.81

Dachneigung Gaube 22°

Bestand

RR 1

+7.75

+9.58^s

+9.56

DG

+1.10

+3.85

+3.90

+6.11

+6.06

OG

-0.10

±0.00

+3.06

+2.96

EG

±0.00

-0.10

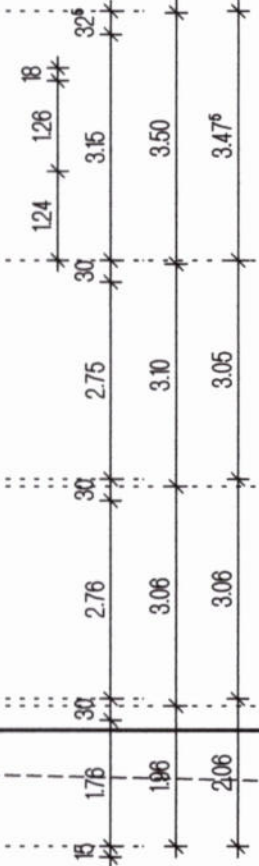
-0.44

65

DN 100

-2.06

KG



en